



MIGALOO  
HOME





## P R E F A C E

Excitement is building along the world as most well-known humpback albino whale named Migaloo begins to make it's migration north form Antarctica. The creatures that inhabit the oceans that he swims through, have the full spectrum of colors- often in intricate patterns and advanced camouflage. This unusual whale called " White Fella" is the only one living animal that you can see from a plane on the vast blue background .

2

Inspired by this vision, we created MIGALOO HOME design & manufacture studio to produce distinctive new world's wide visible projects. We explore the impact of design on entire environment and we take an inspiration from nature. Leading by creative director Monika Blaszkowska we invented the quest for innovation & enduring sense of elegance that goes beyond singular objects.

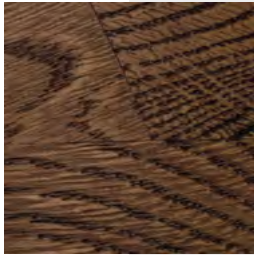
Enter MIGALOO HOME . A playful, provocative and prolific team of designers keen on challenging the status quo.

MAKE YOUR HOME COME TRUE.



L I G H T I N G





**SMALL BULLET** | **stained oak** | Cabinet Luminaires | B1\_BB\_S



Add natural elements to your home with wooden lamp made of best quality selected oak wood. It's distinctive, architectural silhouettes is cast in the style of elegantly turned wood blocks with finely shaped details.



Catalog number:  
B1\_BB\_S



Sizes:  
ø 308mm / h 349mm



Material:  
Solid oak – NATUR structure  
Stained

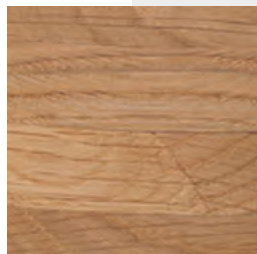


Optics:  
Powder coated steel cage



Lamp power: max 13W LED  
Lampholder: E27  
Voltage: 220-240V





**SMALL BULLET** | **natural oak** | Cabinet Luminaires | B1\_BW\_N



Similar to its predecessor of the Bullets family, yet in a slightly lighter, more delicate and natural version. Perfect for bright, white interiors with elements of wood, kept in Scandinavian style.





Catalog number:  
B1\_BW\_N



Sizes:  
ø 308mm / h 349mm



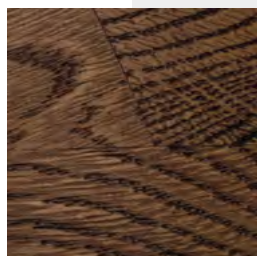
Material:  
Solid oak – NATUR structure



Optics:  
Powder coated steel cape



Lamp power: max 13W LED  
Lampholder: E27  
Voltage: 220-240V



**BULLET FL** | **stained oak** | Floor Luminaires | B2\_BW\_S



Bullet FL is a step further in the direction of a beautifully arranged space. This eye-catching shape will work perfectly at a hotel lobby, elegant restaurant or modern loft. It will make a unique set endowing spaces with chic and uniqueness.





Catalog number:  
B2\_BW\_S



Sizes:  
ø 424mm / h 1279mm



Material:  
Solid oak – NATUR structure  
Stained

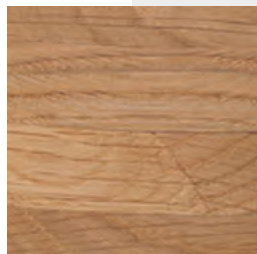


Optics:  
Powder coated steel cape



Lamp power: max 13W LED  
Lampholder: E27  
Voltage: 220-240V





**BULLET FL** | **natural oak** | Floor Luminaires | B2\_BW\_N

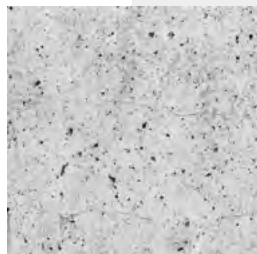
Bullet FL is a step further in the direction of a beautifully arranged space. This eye-catching shape will work perfectly at a hotel lobby, elegant restaurant or modern loft. It will make a unique set endowing spaces with chic and uniqueness.





Catalog number:  
B2\_BW\_S

Floor Luminaires



**CONCRETE TREE** | Cabinet Luminares | CT\_01



Formed of light concrete, polished and smoothed by hands using durable safe materials for best resistance. Beautiful design thing for fine style appreciators ! Contrast between rawness and warm green light is a perfect solution for finishing and fulfilling the interior.

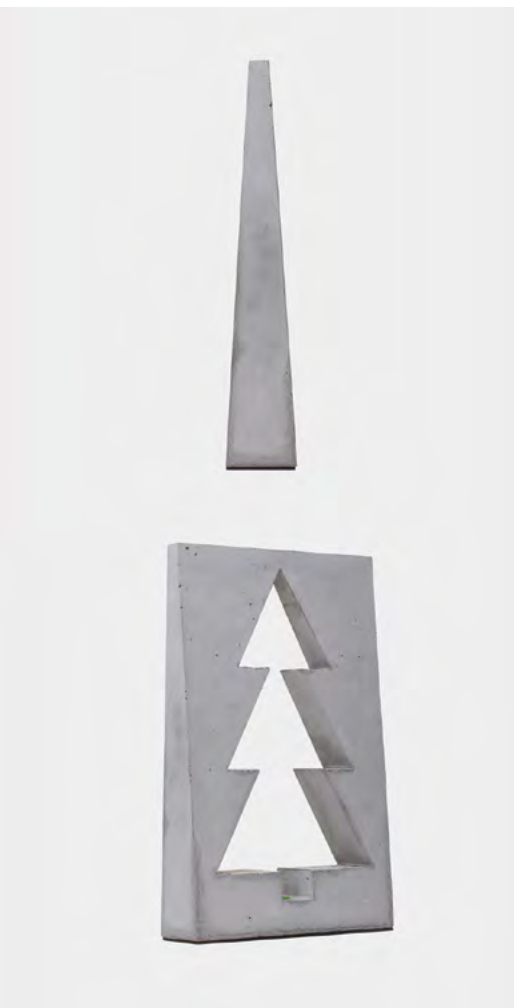




Catalog number:  
CT\_01



Sizes:  
250mm x 70mm / h 403mm



Material:  
Architectural concrete



Optics:  
LED (light-emitting diode)



Lamp power: max 1,4W LED  
Lampholder: none  
Voltage: 220-240V

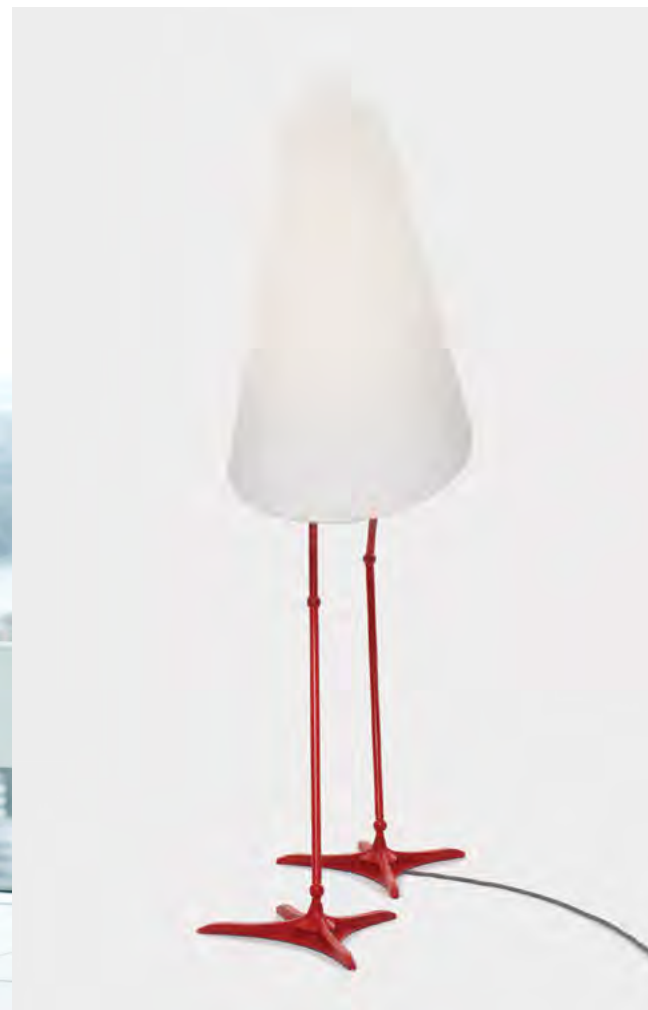




**STORK** | Floor Luminaires | STORK\_01

| A unique lamp inspired by stork legs. It will work perfectly as a humorous element in industrial, minimalistic interiors. Its design has been approved at many international exhibitions about luminaires design.





Catalog number:  
STORK\_01



Sizes:  
max height 1516mm



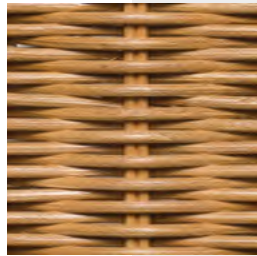
Material:  
Powder coated steel, cotton



Optics:  
Lampshade



Lamp power: max 23W LED  
Lampholder: E27  
Voltage: 220-240V



**PORTO** | Floor Luminaires | PORTO\_01



| This natural rattan hand-woven lamp will surprise you with its inimitable ambiance, mysterious light and magnificence. It will work perfectly in large spaces giving them close to nature character.





Catalog number:  
PORTO\_01



Sizes:  
ø 610mm / h 1800mm



Material:  
Natural Rattan BW – 04



Optics:  
Lampshade



Lamp power: max 13W LED  
Lampholder: E27  
Voltage: 220-240V







**KNOT** | Floor / Pendulum Luminaires | L\_KNOT



Floor and ceiling lamp in one. Depending on the degree it is fixed to the light fitting, it allows to modify the source and intensity of light in a simple and effective manner. When it is a table lamp, its marble element becomes a charming base. When you wish to use it as a ceiling pendant, the marble base will be used as a stabilizing element.



Catalog number:  
L\_KNOT



Sizes:  
ø 400mm - With a marble base



Material:  
Powder-coated aluminum, oak, marble



Optics:  
Lampshade



Lamp power: max 13W LED  
Lampholder: E27  
Voltage: 220-240V





40

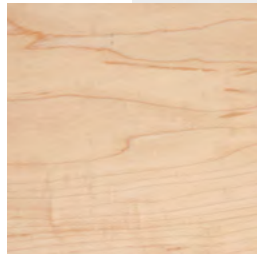


Catalog number:  
L\_KNOT



Sizes:  
ø 400mm / h 610mm

Floor / Pendulum Luminaires



**SCANDI CHANDELIER** | Pendulum lights | SCH\_6



Scandi chandelier is a perfect marriage of modernity with a stylized pendant lamp in eco mode. This unique chandelier will work perfectly with unusual rustic decor and nature-inspired interiors. Available in 6- and 4-arm versions as well as a single wall lamp.





Catalog number:  
SCH\_6



Sizes:  
ø 1475mm  
min. height from ceiling 1500 mm



Lamp power: 2.5W LED  
Lamp holder: G9  
Voltage: 220-240V



Catalog number:  
SCH\_4



Sizes:  
ø 905mm  
min. height from ceiling 1500 mm



Material:  
Plywood,  
Cotton cable

Catalog number:  
SCH\_WL





**AMBER** | Pendulum lights



The lamp shade is made of epoxy resin combined with sand, granite aggregate, glass or fluorescent fiber, or natural mica. Organic design for the sophisticated interiors.





## AMBER 01



Catalog number:  
AMBER\_01



Material:  
Resin, Sand,  
Oak wood



Sizes:  
ø 275 mm  
min. hight from ceiling 1000 mm



Optics:  
Lampshade



Lamp power: max 13W LED  
Lampholder: E27  
Voltage: 220-240V



## AMBER 02



Catalog number:  
AMBER\_02



Material:  
Resin, Granite aggregate,  
Oak wood



Sizes:  
ø 275 mm  
min. hight from ceiling 1000 mm



Optics:  
Lampshade



Lamp power: max 13W LED  
Lampholder: E27  
Voltage: 220-240V





## AMBER 03



Catalog number:  
AMBER\_03



Material:  
Resin, Sand,  
Oak wood



Sizes:  
ø 275 mm  
min. hight from ceiling 1000 mm



Optics:  
Lampshade



Lamp power: max 13W LED  
Lampholder: E27  
Voltage: 220-240V



## AMBER 04



Catalog number:  
AMBER\_04



Material:  
Resin, Sand, Glass felt  
Oak wood



Sizes:  
ø 275 mm  
min. hight from ceiling 1000 mm

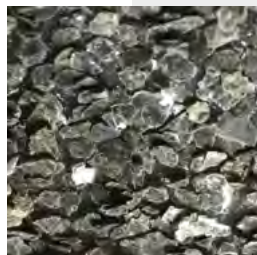


Optics:  
Lampshade



Lamp power: max 13W LED  
Lampholder: E27  
Voltage: 220-240V





## AMBER 05



Catalog number:  
AMBER\_05



Material:  
Resin, Mica  
Oak wood



Sizes:  
ø 275 mm  
min. height from ceiling 1000 mm



Optics:  
Lampshade



Lamp power: max 13W LED  
Lampholder: E27  
Voltage: 220-240V











## LOVE AND GIVE AN EXAMPLE

Migaloo Home team is formed by ambitious and creative people, but also sensitive to the environment in which they live and work. We are aware of the potential of our team – we want to use it by voluntarily supporting the noble ideas. Therefore, every year Migaloo Home allocates 2% of the profit from each lamp dedicated to children for the Gdansk Korczak Foundation “Love and give an example”. Once a year we earmark raised funds to purchase specialized equipment stimulating the rehabilitation and development of children.



[migaloohome.com](http://migaloohome.com)